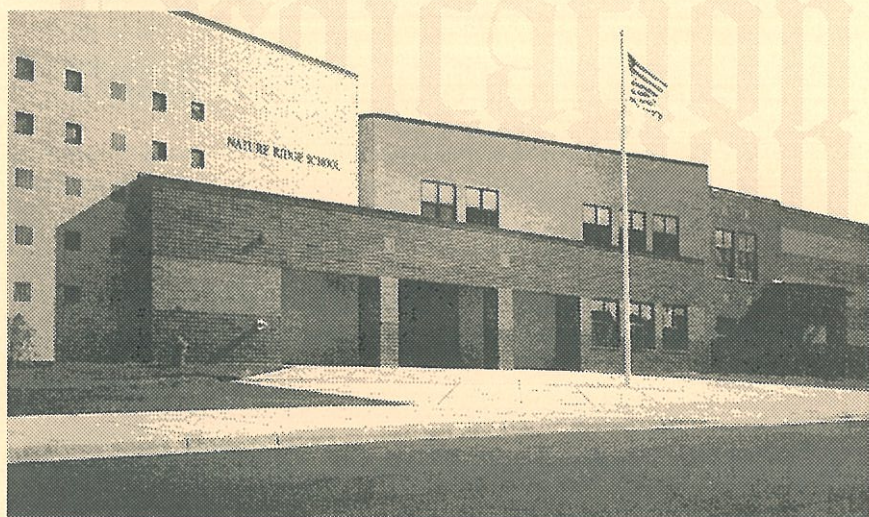


School District U-46

# **Nature Ridge Elementary School Dedication Ceremony**

November 7, 1999





# *Nature Ridge Elementary School Dedication Ceremony*

## *Welcome and Introductions*

*Phyllis Folarin, Principal*

## *Presentation of Colors and Flag Pledge*

*Brownie Troops 515 and 1205*

## *Star Spangled Banner*

*Richard Dittsworth with the Nature Ridge 5th and 6th Grade Chorus*

## *Comments from District U-46 Representatives*

*Mrs. Joyce Fountain, President, Board of Education*

*Dr. Marvin Edwards, Superintendent of Schools*

## *Comments from Nature Ridge PTO Presidents*

*Caryn Palewski and Silvia Stade*

## *Musical Program 5th and 6th Grade Chorus*

*Cecelia Anderson, Director*

## *Presentation from Burnidge, Cassell & Associates*

*Charles Burnidge, President*

*Tours of the Building will be guided by members  
of the 5th and 6th Grade Chorus.*

*Refreshments will be available in the Nature Ridge Cafe  
following the Dedication Ceremony.*

*This is a special event. Thank you for joining us.*

## Message from the Principal

ON BEHALF OF THE STAFF, STUDENTS AND FAMILIES of Nature Ridge School, we welcome you to our new building. We are very proud and excited about our beautiful new facility and are committed to serving our community and its children for many years to come.

We wish to dedicate this building to the children of Nature Ridge. They are the thinkers and the leaders of the future. We ask for your continued support as we strive to provide a nurturing and academically challenging learning community.

We would like to acknowledge and thank some of those who contributed to the development of our new school:

- The voters who gave their approval in the last referendum; the District U-46 Board of Education and their advisors; Dr. Edwards, Superintendent of Schools, and the Superintendent's Staff; and, the Citizens' Advisory Council for their vision in seeing the need for our school and their leadership in initiating the project;
- The talented architects, trades people, contractors, District U-46 Construction, Plant Operations staff and Warehouse department staff who worked with much dedication to open this building on time;
- The staff of Nature Ridge School for their enthusiasm, professionalism, dedication and willingness to embrace the changes and challenges that lay before them;
- The families of Nature Ridge School who have shown their willingness to make this school their school by volunteering their services in many different areas.

This building represents the culmination of a dream to provide an exceptional educational facility, and we are fortunate to be a part of this new beginning. We hope that you will continue to support and be involved in this important task. Let us be known as Nature Ridge Elementary School where our total commitment is providing a quality education "For all our Students."

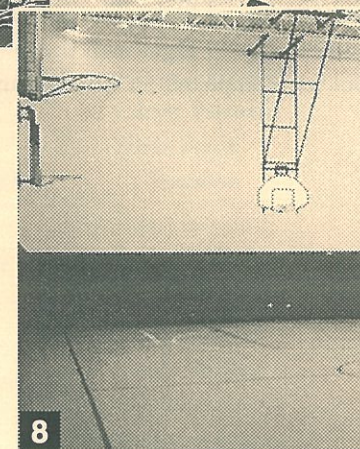
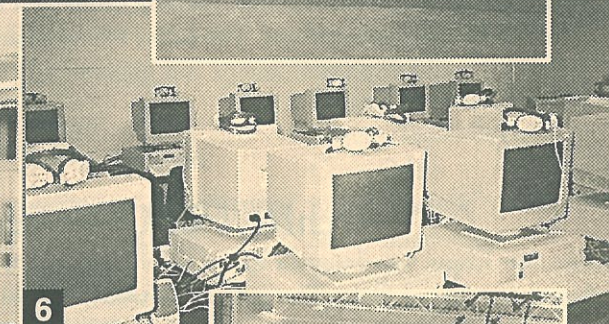
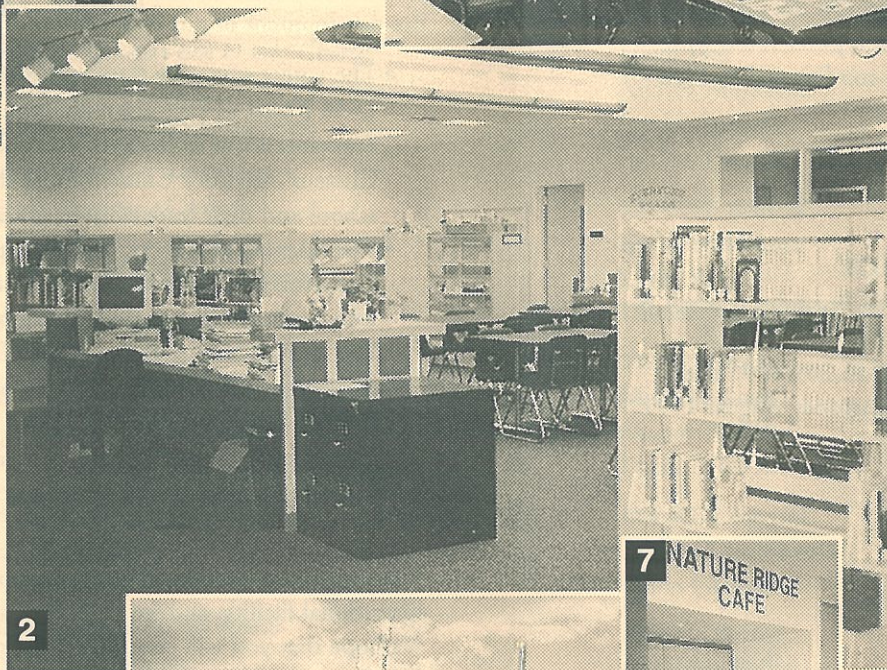
Phyllis Folarin  
Principal



# A Look At Your New School



- 1 Visitors to Nature Ridge are welcomed as they arrive at our main entrance.
- 2 The Learning Center features the latest in educational resources, as well as a dedicated reading area.
- 3 The playground gives students an opportunity to develop friendships and burn off some energy.
- 4 A Kindergarten classroom sets the tone for young learners as they begin to explore new activities.
- 5 Private entrance to the Kindergarten classrooms.
- 6 The Computer Lab is equipped with a "Creation Station" that works with the latest software, a color printer, CD recorder, digital camera and a scanner.



- 7 The Lunchroom/Multi-purpose room gives students a place to relax, regroup and explore.
- 8 Children can develop important physical education and social skills in our Gym that may benefit them throughout their lives.



## Nature Ridge Elementary's Key Features

**T**HIS NEW ELEMENTARY SCHOOL is located immediately south of West Bartlett Road on Westridge Boulevard in Bartlett. It is a two-story structure with a masonry exterior accommodating 650 students in kindergarten through sixth grade. There are three classrooms per grade level measuring 860 square feet each. In addition, there are larger kindergarten classrooms measuring 1,250 square feet with storage and washrooms.

In addition to the 20 classrooms, there is a 2,125 square foot multi-purpose room with lunch tables that seat 180 people and a 3,000 square foot gymnasium with an office, washrooms and exterior storage space. On the upper level, there is an art room, music room, learning center and computer room with space for 30 computer stations. The entire school is air conditioned and has space for a main office, staff lounge and itinerant offices.

## Architect & Contractor

The new school was designed by the architectural firm of Burnidge, Cassell & Associates, Inc. of Elgin. The general contractor for this project was L.E. Zannini & Co. of Elgin with the lowest qualified bid of \$5,289,079. The school was completed on schedule and was ready for occupancy August 1999.

## Nature Ridge Elementary Staff 1999-2000

### PRINCIPAL

Phyllis Folarin

### KINDERGARTEN

Stacey Luttig

Dee Maroney

Jennifer Meadows

Barb Raupp

### FIRST GRADE

Carol Carlson

Heidi Hill

Andrea Mazzocco

Jeanne Spencer

Andria Vasquez

### SECOND GRADE

Kathleen Hunter

Linda Park

Doreen Roberts

### THIRD GRADE

Michelle Lose

Megan Partick

Laura Sulzman

### FOURTH GRADE

Andrea Dombrowski

Venus Gintowt

### FIFTH GRADE

Josephine Bailey

Jennifer Slaten

### SIXTH GRADE

Greg Anthony

### EN1 PRIMARY

Ann Hammerel

### EN1 INTERMEDIATE

Jodi Kelley

### PRE-KINDERGARTEN

Stacey Luttig

Jennifer Meadows

### LIBRARY PARA-PRO

Betsy Pierce

### ART

Liz Henninger

### MUSIC

Cecilia Anderson

### PHYSICAL EDUCATION

Jay Bartholomew

### LD RESOURCE

Pam Timm

### SPEECH/LANGUAGE

Kris Slifka

### SOCIAL WORKER

Tracy Walsh

### PSYCHOLOGIST

Min Lin

### NURSE

Maryellen Wessendorf

### SECRETARIES

Angela Maynard

Silvia Stade

### CLERICAL

Theresa Krieb

### CUSTODIAN

Eric Peterson

### LUNCH SUPERVISOR

Pam Schnecke

### CLASSROOM ASSISTANTS

Dawn Kiermier

Tamara McGinley

Chris Odem

Pamela Parisek

Sandy Shenouda

Dushay Suggs

Maria Vargus

### PTO OFFICERS

Caryn Palewski

Silvia Stade

Co-Presidents

Zita Hart

Rob Mefford

Co-Vice Presidents

Kathie Smith

Sandy Wilkey

Co-Secretaries

Donna McIntire

Kelly Scampini

Co-Treasurers



**BOARD OF  
EDUCATION**

Joyce Fountain  
*President*

Karen Carney  
*Vice President*

Dr. Robert Wise  
*Secretary Pro-Tempore*

Dr. Sandra Angelo

Douglas Heaton

Janet Korman

Glenn Murphy

**DISTRICT U-46  
ADMINISTRATION**

Dr. Marvin E. Edwards  
*Superintendent*

Lalo Ponce  
Jim Feuerborn

Paul Patterson  
*Area Superintendents*

Gordon Schulz  
*Assistant Superintendent  
of Management Services*

Robert Gilliam  
*Assistant Superintendent of  
Human Resources*

Richard Majka  
*Assistant Superintendent for  
Employee Relations*

Ann Riebock  
*Assistant Superintendent for  
Educational Services and  
Accountability*

Larry Ascough  
*Director of  
School/Community Relations*



**School District U-46**  
Administrative Offices  
355 E. Chicago St.  
Elgin, IL 60120-6543  
847-888-5000